



 6 bedrooms

 4 bathrooms

 Double Garage

 256.35 Sq M

VISTA 4 GRANNY FLAT

The property features everything you need for comfortable living. Interior spaces have been carefully planned to maximize living space, Whilst connecting seamlessly to the outdoors.

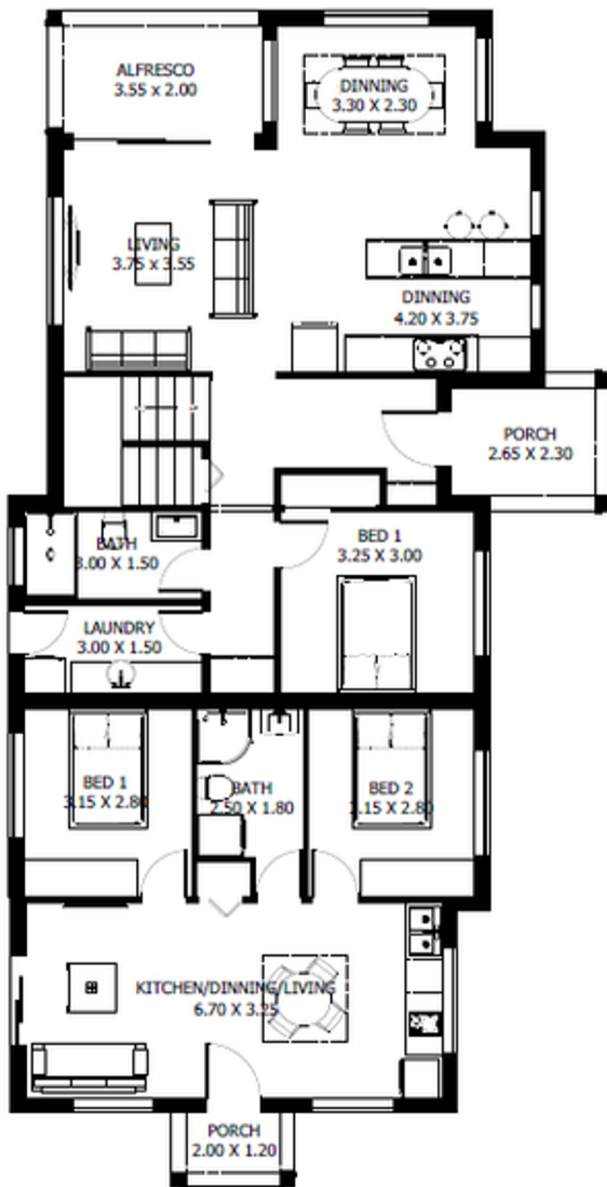
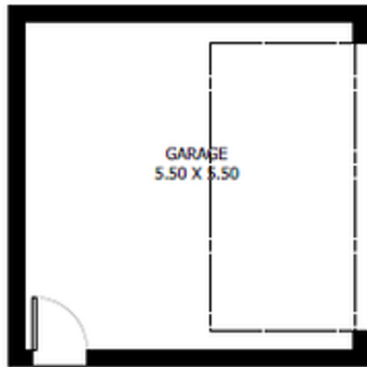


KEY FACTS

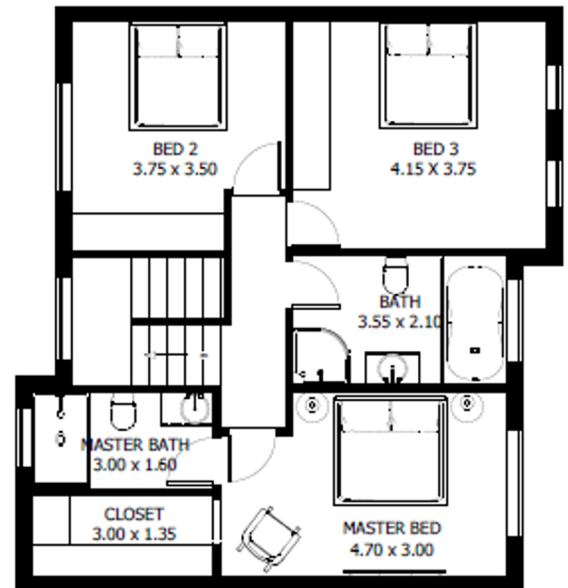
- ✓ Double storey
- ✓ 6 bedrooms
- ✓ 4 bathrooms
- ✓ Double Garage
- ✓ 256.35 Sq M
- ✓ Exterior width 9.80 m
- ✓ Exterior length 26.80 m

FLOOR AREAS

Ground Floor	141.00 sqm
First Floor	78.00 sqm
Alfresco	7.10 sqm
Garage	30.25 sqm
<hr/>	
Total Floor Area	256.35 sqm



Ground floor



First floor



↔ 9.80 M
↑↓ 26.80 M